

SEEK NZ Employment Snapshot

This snapshot complements the SEEK NZ quarterly employment report that is released quarterly. SEEK will publish regular insights based on job ad movements compared to a baseline of April 2020.

Key insights (weeks 23 & 24 compared to April 2020):

- New job ads posted on SEEK NZ during the fortnight ended 14 June are up 133.9% compared to the April 2020 average
- The biggest contributors to job ad growth are Trades & Services, Administration and Office Support, Manufacturing, Transport & Logistics, Retail & Consumer Products and Healthcare & Medical
- Canterbury (125.7%), Auckland (118.9%) and Wellington (112.2%) are showing increases in job ad volumes
- Optimism for future employment / job prospects declined 10% between February and May and is now sitting at 62%

A SLOWLY IMPROVING LABOUR MARKET

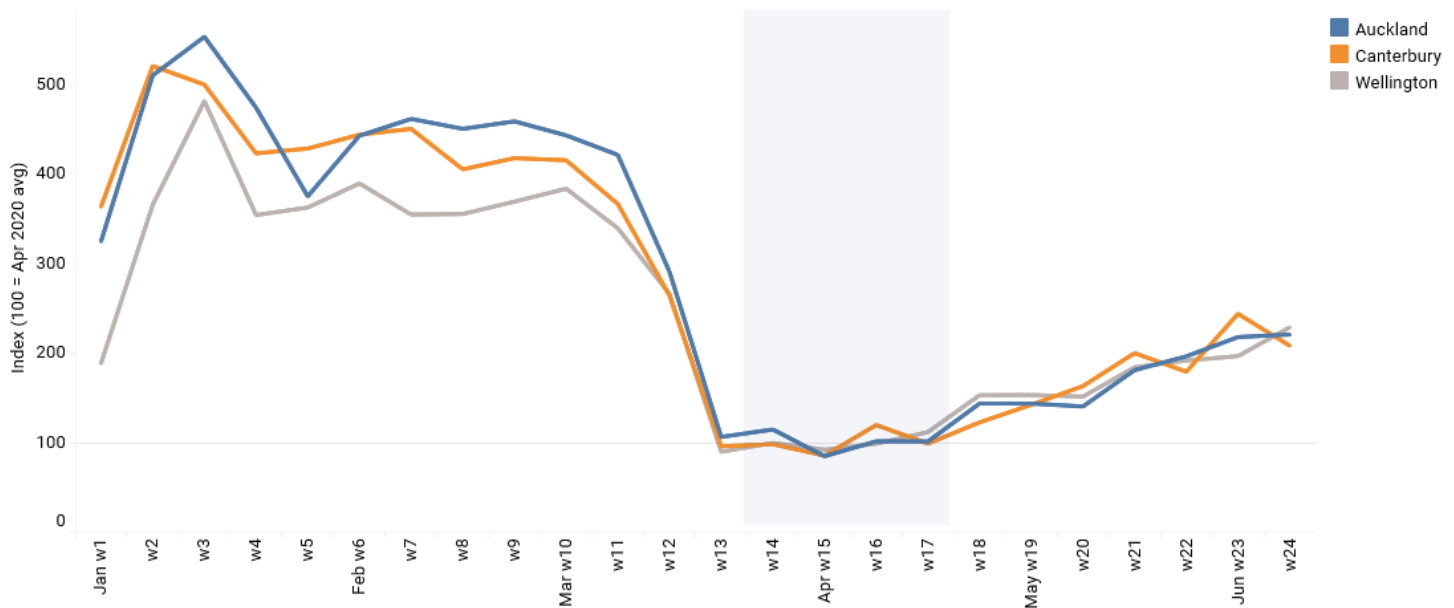
Janet Faulding, General Manager SEEK NZ comments: "With the lifting of restrictions we have seen an increase in job advertising of 133.9% in the fortnight ended 14 June, compared to the average of the month of April. Our SEEK employment data shows a direct correlation between restrictions easing and job ad volume growth. While we don't expect to see a return of pre-COVID volumes of jobs advertised for some time yet, early numbers indicate positive signs for New Zealand's employment market."

"Large hiring industries such as Trades & Services, Manufacturing, Transport & Logistics and Healthcare & Medical made strong contributions to job ad growth in the last fortnight. We expect to see more opportunities for jobseekers in the coming weeks as businesses look to recommence their operations quickly."

"There are also some promising signs in the regions, with the majority showing an increase in job ad volumes compared to April. Canterbury (125.7%), Auckland (118.9%) and Wellington (112.2%) showed positive job ad volume growth in the last two weeks."

FIGURE ONE: SEEK NEW JOB ADS FOR 2020

SEEK New Job Ads (2020)



Source: SEEK

WHERE THE JOBS ARE

- **Trades & Services:** roles such as Building Trades, Labourers, Automotive Trades, Electricians and Hair & Beauty Services
- **Information & Communication Technology:** Developers/ Programmers, Business/ Systems Analysts, Software Engineering, Help Desk & IT Support and Project Management
- **Healthcare & Medical:** Psychology, Counselling & Social Work and Nursing (Aged Care and General Medical)
- **Manufacturing, Transport & Logistics:** Warehousing, Storage & Distribution, Machine Operators and Assembly & Process Work
- **Construction:** Project Management, Foreperson/ Supervisors, Plant & Machinery Operators and Surveying

HOW HAS COVID-19 CHANGED THE WAY WE WORK?

SEEK conducts surveys with Kiwis currently employed and those looking for work to understand their position on work and career related subjects.

- Optimism for future employment / job prospects has notably declined over the past few months from 72% in February to 62% in May. (Figure two)
- People's sense of job security remains consistent with a small drop since February (71%) and stabilizing at 66% in April and May (Figure three)
- The number of people that have reported that their working life is very different compared to pre-COVID has dropped from 50% in April to 34% in May (Figure four)
- The number of Kiwis that have seen a return to a normal working life, or told us that the COVID situation did not impact their working lives at all, has increased from 15% in April to 22% in May (Figure four)
- 2 in 5 Kiwis are still working from home and more than 1 in 10 have been asked to take annual leave over this period (Figure five)

FIGURE TWO: Percentage of people that answered 7/10 or higher to the question “In general, how do you feel about your future employment/ job prospects?”

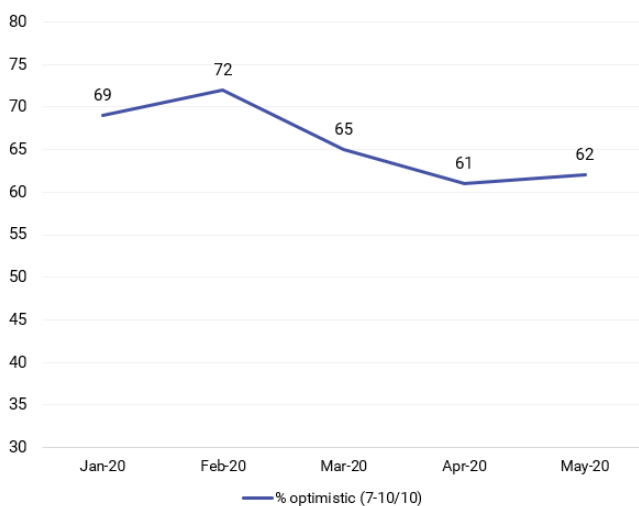


FIGURE THREE: Percentage of people that answered 7/10 or higher to the question “How secure do you feel your current job is?”

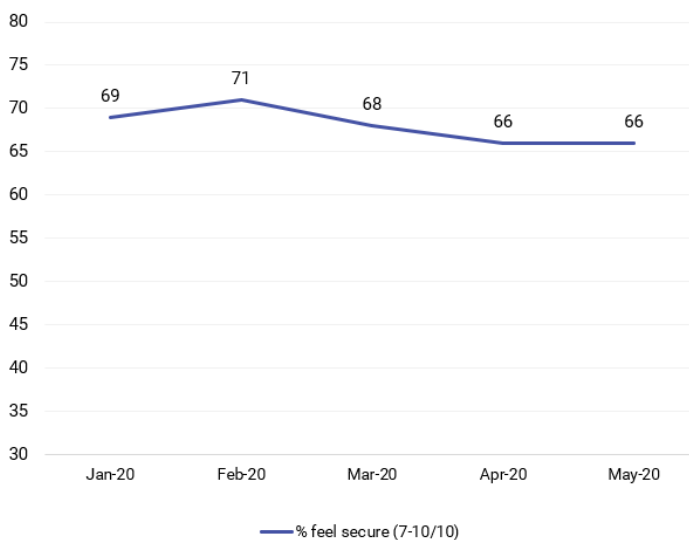


FIGURE FOUR: Responses to the statement “As a result of COVID-19, your current working situation...”

Sig. higher ▲/lower ▼ than the previous time period

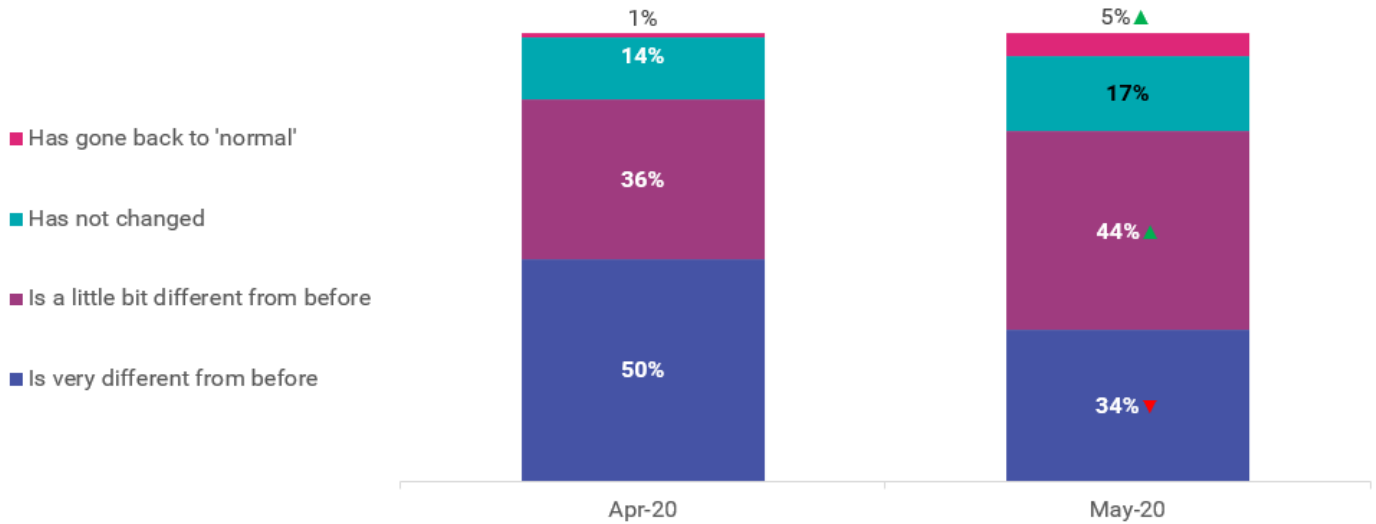
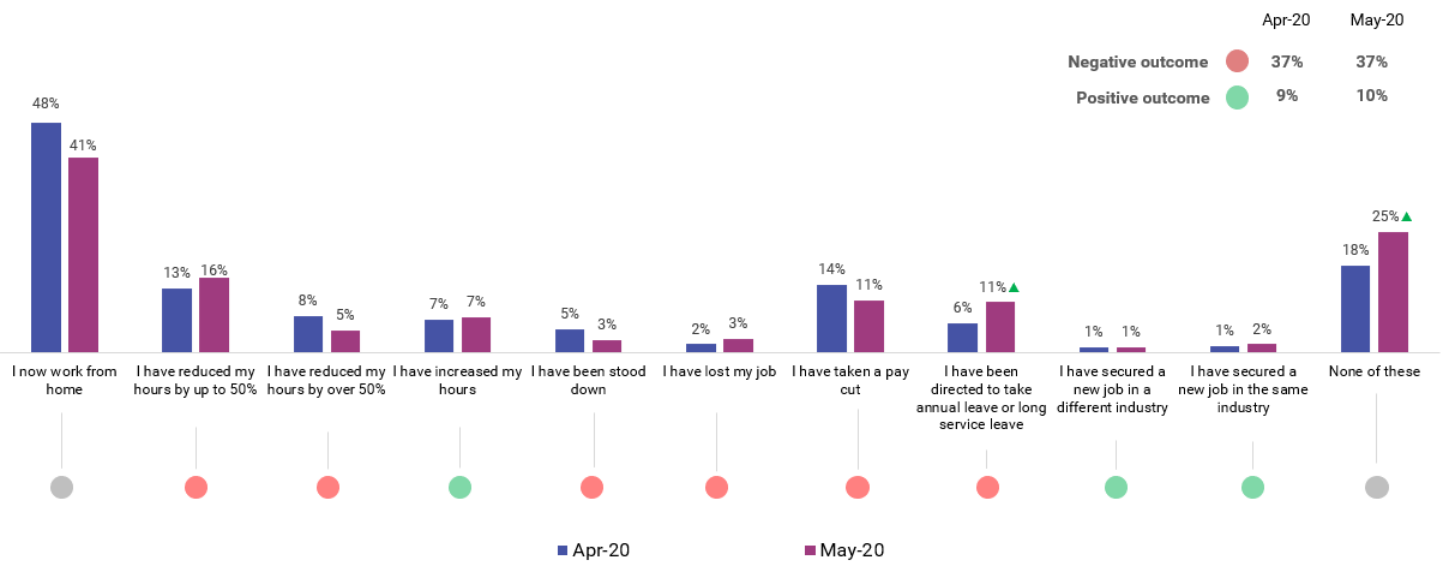


FIGURE FIVE: Answers to the question “As a result of COVID-19, which of the following have you experienced?”



-ENDS-

Disclaimer: The Data should be viewed and regarded as standalone information and should not be aggregated with any other information whether such information has been previously provided by SEEK Limited, ("SEEK"). The Data is given in a summary form and whilst care has been taken in its preparation, SEEK makes no representations whatsoever about its completeness or accuracy. SEEK expressly bears no responsibility or liability for any reliance placed by you on the Data, or from the use of the Data by you. If you have received this message in error, please notify the sender immediately.

SEEK job ads: Job ad data is based on all paid job ads posted to SEEK during the week, weighted for the number of business days. Therefore, these figures may differ slightly from the monthly SEEK Employment Report which has different adjustment factors applied.

Candidate survey: Independent research conducted by Nature on behalf of SEEK. Interviewing 3,000 + Kiwis annually. Data sets: Jan n=312, Feb = 311, March n=320, April n =395, May n=332.

About SEEK

SEEK's purpose is to help people live more fulfilling and productive working lives and help organisations succeed. SEEK makes a positive contribution to people's lives on a global scale. SEEK is the global leader in the creation and operation of online employment markets. Globally, SEEK has relationships with over 1.1 million hirers and 215 million candidates. SEEK makes a positive contribution to people's lives through connecting more people to relevant job opportunities using its marketplace scale and technology to build radically more efficient and effective employment marketplaces. SEEK is an integral part of New Zealanders job-search process, and as the country's leading employment marketplace is uniquely positioned to empower New Zealanders with career and volunteer opportunities to create productive and fulfilling working lives.

Reports

SEEK will publish new job ad data regularly until such time it is no longer required.

The latest SEEK Employment Report is available to view here seek.co.nz/about/news

Contact details

Amelia Williams
Senior Comms Advisor, SEEK
E: ameliaw@seek.com.au
P: +61 422 500 790

Andy Maxey
Senior PR Specialist, SEEK
E: amaxey@seek.com.au
P: +61 467 748 567

Eleisha Balmer
Head of PR, Adhesive PR
E: eleisha@adhesivepr.nz
P: +64 27 690 1222